



rotec[®] High Speed Sleeve

New sleeve with a specialized design for high speed press performance

Available wall thicknesses from 3 mm/0.118" to 100 mm/3.94"
Special sizes available on request

Product advantages

- Higher print speeds and consistent press performance achievable due to impression dampening characteristics
- Specialized surface reduces press vibration and bounce with difficult graphics
- Continuous printing for full tone and larger elements
- Low dot gain

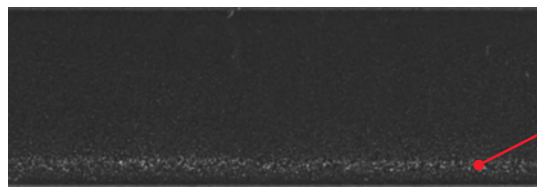
Product features

- Suitable for thin plates (0.76 mm/0.030"; 1.14 mm/0.045"; 1.70 mm/0.067")
- Highly specialized polyurethane structure
- Generally solvent-resistant if handled correctly (see rotec[®] User's Advice)
- High-precision grinding (TIR \leq 0.025 mm/0.001") measured on carrier cylinder at TIR \leq 0.005 mm/0.0002")
- Can be combined with various types of adapters and cylinders
- Proven rotec[®] sleeve interior design of synthetic resin and fiber compound assures long-lasting and consistent mounting characteristics

rotec® High Speed Sleeve

Print advantages with rotec® High Speed Sleeve

Hard Sleeve - 1000 fpm (305 m/min)



bounce-induced skip

High Speed Sleeve - 1500 fpm (460 m/min)



skip eliminated

The specialized composition of the rotec® High Speed Sleeve simultaneously eliminates bounce-induced skip while allowing for a significant increase in press speed.

Product specifications

Runout tolerance	TIR ≤ 0.025 mm/0.001" measured on carrier cylinder at TIR ≤ 0.005 mm/0.0002"
Diameter tolerance	± 0.025 mm/.001"
Wall thicknesses	from 3 mm/0.118" to 100 mm/3.94"
Lengths	standard: up to 2400 mm/94.5" special sizes: available upon request
Diameters	nearly all diameters
Material	compressible polyurethane surface proven rotec® sleeve interior design of synthetic resin and fiber compound
Adapters	can be combined with various types of adapters and cylinders
Notch	available with composite or metal-reinforced notch
Printing plates	suitable for thin plates (0.76 mm/0.030"; 1.14 mm/0.045"; 1.70 mm/0.067")
Adhesive tapes	suitable for 5 mil mounting tapes
Handling	see rotec® High Speed Sleeve User's Advice

Please contact your Regional Sales Manager for additional information.

Customer Service
Flint Group Flexographic Products
95 Glenn Bridge Road
Arden, NC 28704

T +1 877 768 3248
F +1 828 681 9595
info.flexo@flintgrp.com
www.flintgrp.com

All information in this document is based on our present knowledge and experience at the time of printing. Due to the multitude of factors influencing the processing and application of our products, it does not exempt the user from testing and calibrating. Nor does it imply any legally binding assurance concerning specific properties of the products or the suitability for a particular application. The responsibility of observing any possible industrial property rights, laws and regulations is the obligation of the user. Subject to technical changes without prior notice. rotec® is a registered trademark and Rely on UsSM is a service mark of Flint Group.